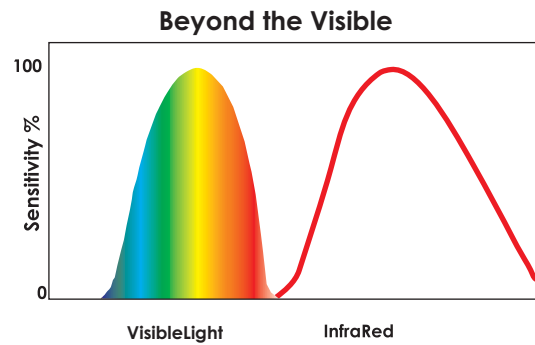
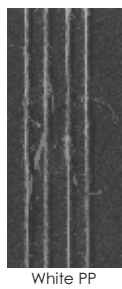


## Unique and Innovative Technology

**ClassiQ6** is the first classification system to use a combination of VisibleLight and InfraRed technologies. While the VisibleLight is used to detect contamination that is of a different colour compared to the parent yarn, InfraRed is used to detect contamination that is of the same colour as the parent yarn, but of a different material example: White PP



### Technical Data \*

#### Basic Installation

Measuring Head (MH)	: 6 nos	Pneumatic Kit	: 1 set
Power & Interface PCB assembly	: 1 per 3 MH's	Tension Device	: 1 per MH
Control Unit	: 1 no	Temp & RH% sensor	: 1 no
Automatic Air Blow System	: 1 per MH	Maintenance Kit	: 1 set
Automatic Speed Sensor	: 1 per position	PC & Printer	: 1 no

#### Measuring Principle

Mass Faults	: Capacitance	Foreign Fibre	: VisibleLight
Hairiness	: Optical	White PP	: InfraRed

#### Application Range

Count	: Nec 3' to 200' (Nec 3' to 80' : MH20; Nec 12' to 200' : MH15)
Material	: Nm 5' to 340' (Nm 5' to 135' : MH20; Nm 20' to 340' : MH15)
Drums#	: 100% Cotton, Polyester, Viscose and Blends
Machine (To be provided by Customer)	: 6 / 12 drums
Winding Speed	: Manual Cheese Winder or Automatic Winder
Recommended test length	: 300 to 1200 m/min
Operating Mode	: 200 km
	: Cut mode and Classification mode

#### Output Parameters

##### Class wise Report (Graphical)

Mass	: 30 Thick and 15 Thin classes
FF	: 34 classes
White PP	: 12 classes

##### Class wise Report (Numerical)

Mass (Neps & Short Thick)	: 20 Classes	Mass (Extra Sensitive Short Thick)	: 3 Classes
Mass (Long Thick)	: 3 Classes	Mass (Extra Sensitive Long Thick)	: 4 Classes
Mass (Long Thin)	: 4 Classes	Mass (Extra Sensitive Long Thin)	: 4 Classes
Mass (Short Thin)	: 6 Classes	Mass (Extra Sensitive Short Thin)	: 1 Class
FF	: 34 Classes	White PP	: 12 Classes

#### Fault Scatter Information

: Mass, FF and White PP

#### Evaluation

: Absolute & Per 100 km, Cumulative & Non-Cumulative and Group & Spindle Wise

#### Power Requirements, Compressed Air Consumption and Ambient Condition

- 125 VA, Single Phase; 1KVA Online UPS
- 1.75 m<sup>3</sup>/hr at 4 Bar
- Relative Humidity : 65 ± 2%
- Temperature : 21 ± 1°C [27 ± 1°C for Tropical Conditions]

\* Subject to change without Prior notice  
# For 12 drums, please refer to **PREMIER**

#### Premier Presence



- International Sales Office & Works
- Sales & Service Resource Centres

**premier evolvis pvt. ltd.**  
SF No. 79/6, Kulathur Road  
Venkitapuram Post  
Coimbatore - 641 062, India  
Phone : +91 422 6611000  
Fax : +91 422 6611005  
E mail : sales@premier-1.com  
[www.premier-1.com](http://www.premier-1.com)

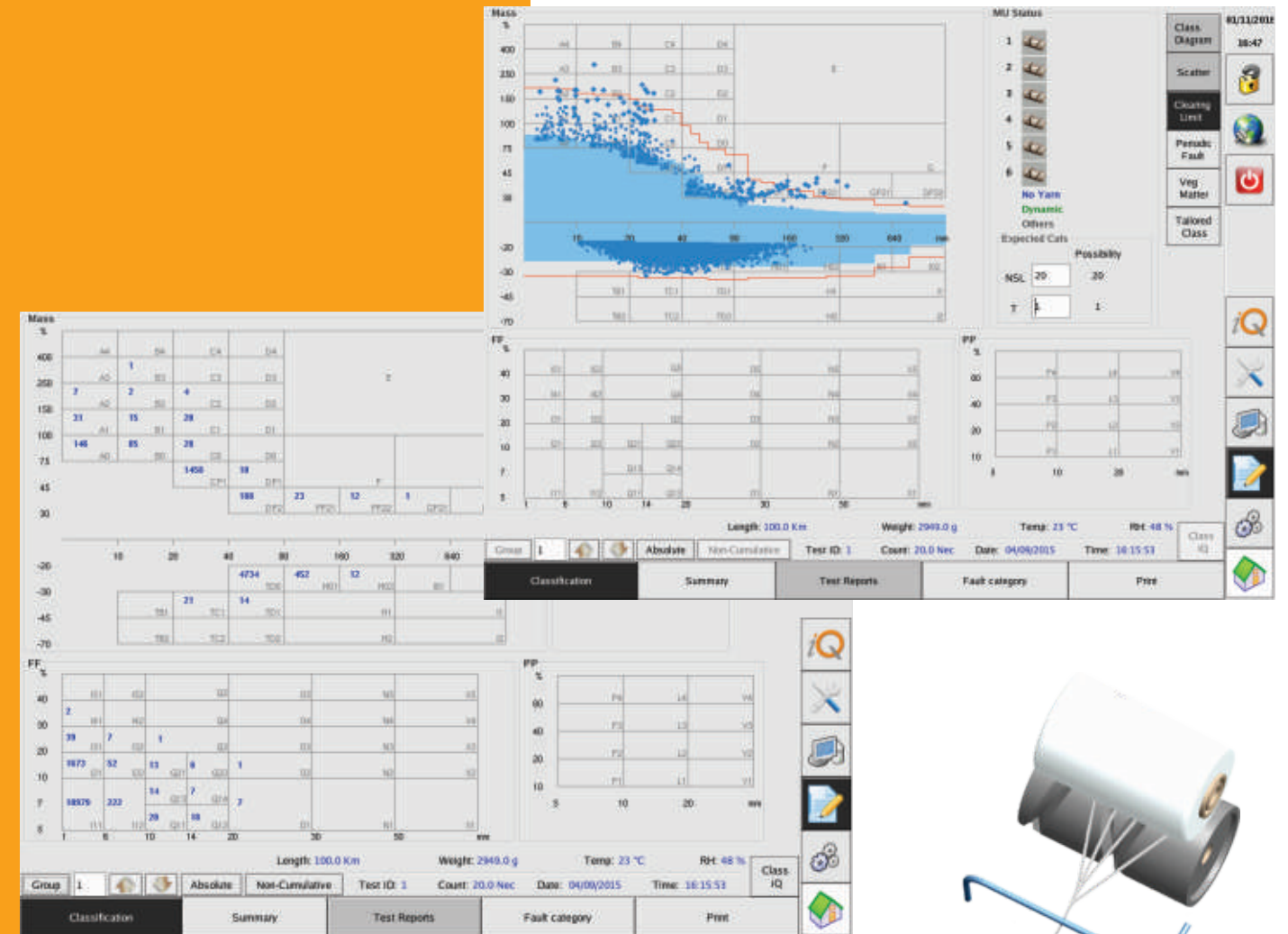
05000917

# ClassiQ6™

## ALL NEW Classification Standard

with Foreign Fibre and White PP classes

# PREMIER



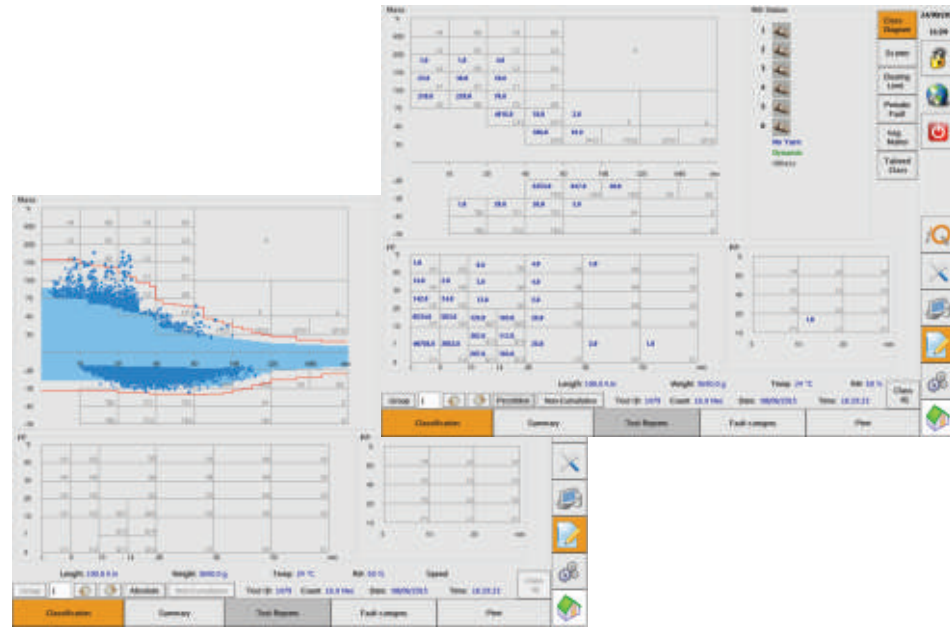
# ClassiQ6™

**ALL NEW Classification Standard** with Foreign Fibre and White PP classes

ClassiQ6 is the latest offline classification system which classifies Mass, Foreign Fibre and White PP faults in both cleared and uncleared yarns to optimise clearer settings and to keep track of the process

## Mass, FF & White PP Classification with Clearing Limits

- Exact representation of mass faults in 45 different classes for better process optimisation
- Clearing limits represented over scatter chart indicating mass variations and fault distributions which serve as a basis for arriving optimum clearing limits for various yarn types



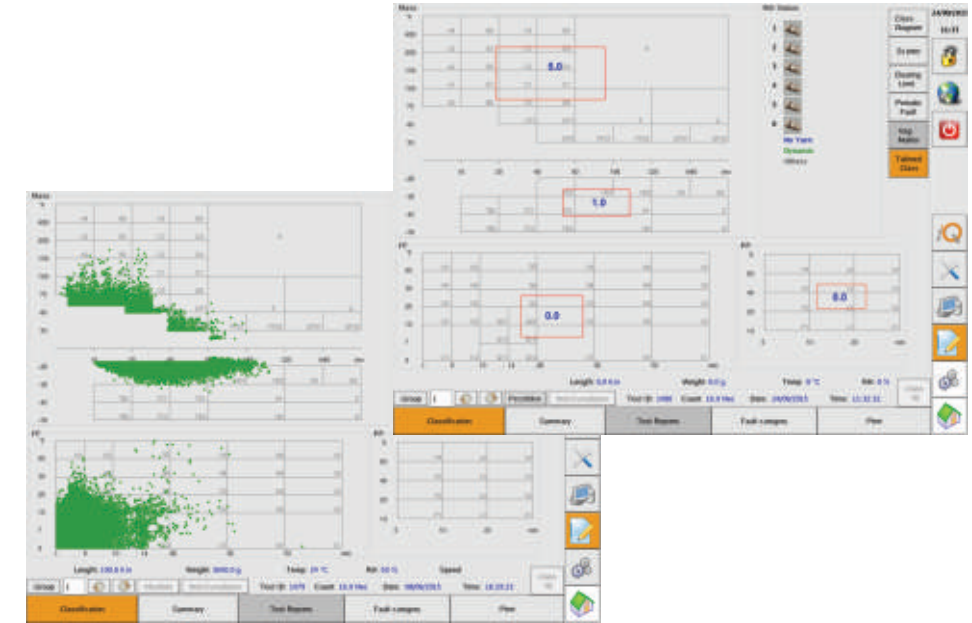
## Exceptions and Periodic Faults

- Exceptional faults, imperfections and Hairiness are determined for the tested material and expressed as a percentage which helps spinners to control rejections significantly
- Worst 5 Periodic faults in terms of repetitiveness tabulated which helps user to reduce serious fabric defects.



## Scatter Diagram and Tailored Classes

- Scatter diagram helps to arrive at the most efficient clearing limits in a very quick manner. It also helps to identify problems in the back process
- Independent distribution for Mass, Foreign Fibre and White PP faults help user to take the appropriate action
- In Tailored Classes, user can mark any area in the class diagram and can count the number of faults in that defined area. This feature is very useful to monitor any specific alarming fault zones



## Trend, Ranking and Benchmarking

- Trend graphs helps user to know the long term performance of any quality parameter
- User can plot Trend graphs for any lot tested for a selective time period. Information can be seen numerically also as a table
- Rank analysis is an unique tool to compare all quality characteristics between various tested samples and arrive ranks through user defined weightages
- Benchmarking tool helps to compare any test result with previous selective periods and to analyse the trend for various quality characteristics for that specific lot

